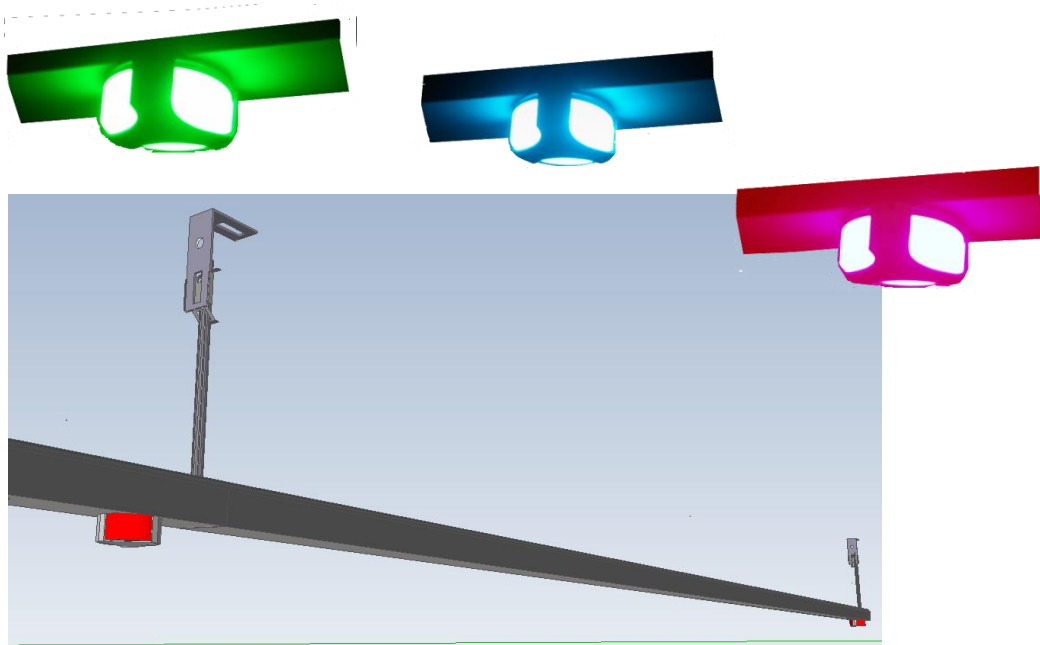


MP-PSlot

MaxiPark



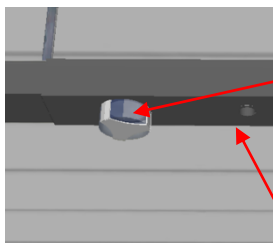
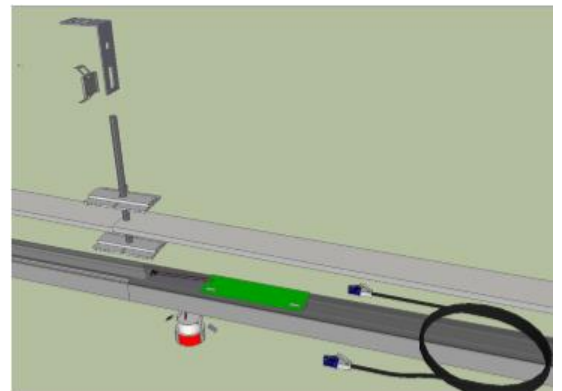
Parking sensor and Strong LED is as a standard built into trunking (MP-Trunk) made from Halogen free thermoplastic trunkings for maximum safety.

There is also a very practical Bracket Kit, which saves a lot of installation time and makes the installation proper.

There is also a 3 m Patch cable with RJ45 contacts in order just to snap that communication cable to the MP-Sens

All these components together is in principal all what is needed for one parking slot.

The common article number for this is MP-PSlot



LED

Delivered in 3 m pieces.

Cut to the width of the parking slot. Only one bracket (recommended MP-Bracket) per parking slot. This means Quick and low cost installation.

Sensor

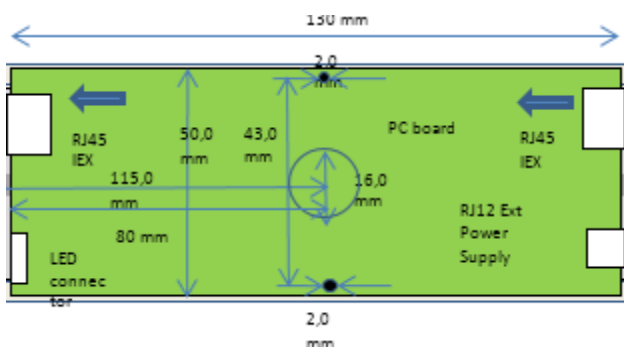
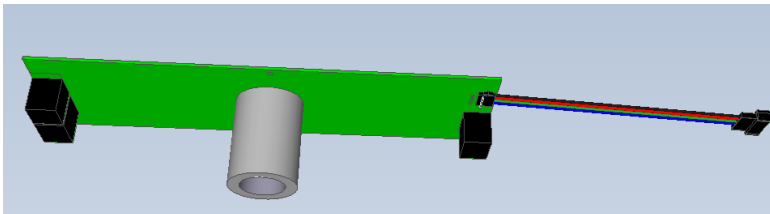


3 m patch cable with RJ45 contacts. Part no MP-Cab3

New Technology:

- **The LED is a strong (esthetical RGB).** This means that we will be able to change to any color by the control system and automatic dimming. This is especially good if the handicap slots will change
It is also possible to moderate the strength automatically because of the ambient light.
- The sensor/LED logics will be possible to change and reprogram remotely. This means that if there will be a change or upgrade of the function it can be done to each sensor/LED from distance.
- The mounting of the sensor/LED board will be easier if it is installed later or changed.
- The connections will be even easier. The previous type of Connect board is not necessary. Just connect cable in and cable out from the sensor/LEDs by a standard modular contact. Very quick and no errors
- To add extra power supply is just to connect a modular contact from the PS.
- No address setup. All the modules will find the addresses automatically.
- Very practical for installation and maintenance. No errors.
- Remote and automatic calibration is possible

MP-Sens



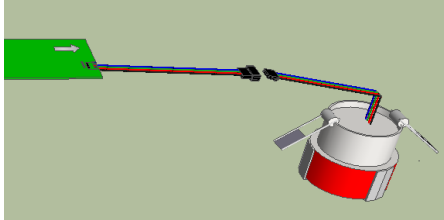
The MP-Sens is mounted in the MP-Trunk which has got all holes already pre-made

The holes for the MP-Sens and MP-LED are pre-punched in order Just to push out and make the installation very quick.

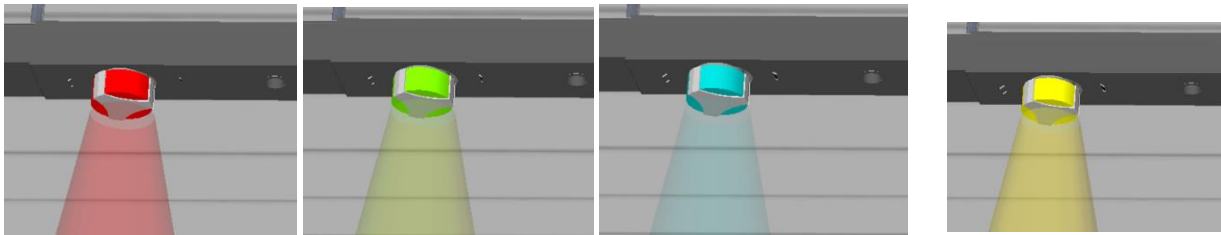
When to installation procedures for protected installation is followed the MP-SensLed can in practice reach IP55.
See Installation manual.

Part numbers:
MP-Sens

MP-Led



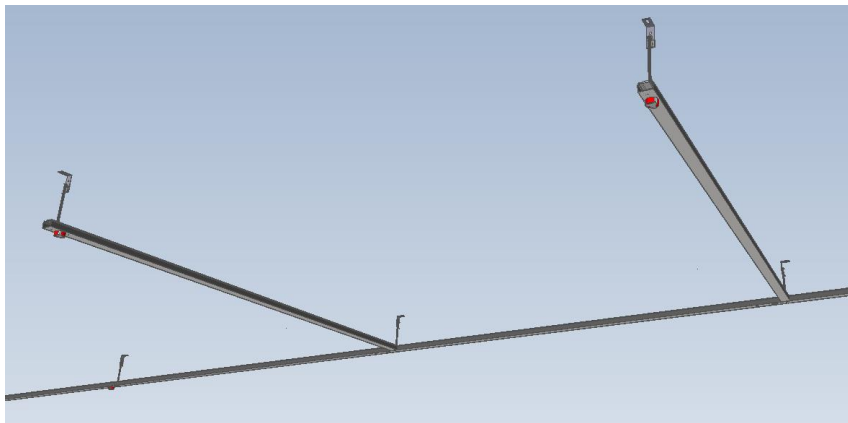
RGB LED (full color) 48 x 40 mm Up to 3 Watt. Adjustable by the software parameters
To be connected to the MP-Sens (existing connectors)



The LED is of RGB type and any beside the mainly used colors Green, Red and Blue (for disabled) any other color can be displayed for different purposes.

Part numbers:
MP-Led

MP-PSlot-T



When it is needed to have the LEDs in the corridors there will be one extra trunking and one extra bracket kit.

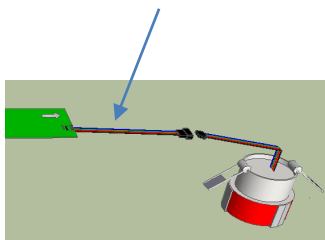
The sensor is still in the main trunking.

There is a 3 m extension cable between the LED and the sensor board.

MP-PSlot-T consist of:

- 2 MP-Trunk
- 1 MP-Sens
- 1 MP-Led
- 2 MP-BracketKit-
- 1 MP-CabExtend
- 1 MP-Cab3

Extension cable: 3 m

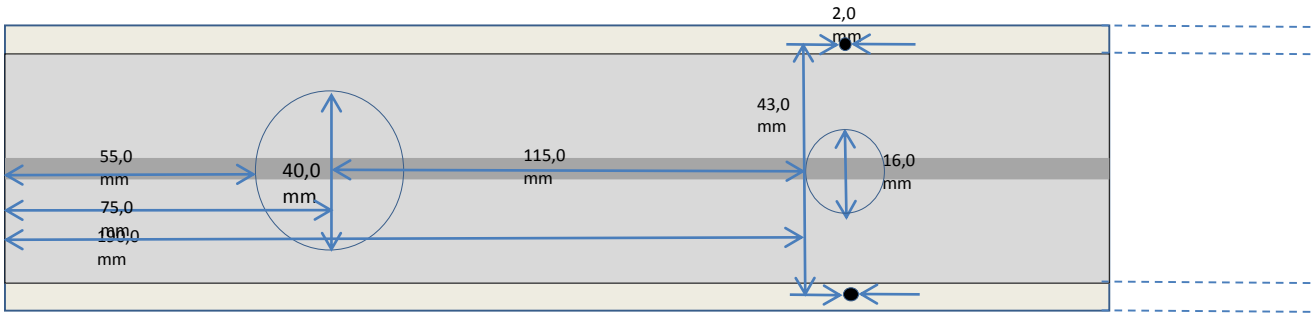


Part no MP-CabExtend

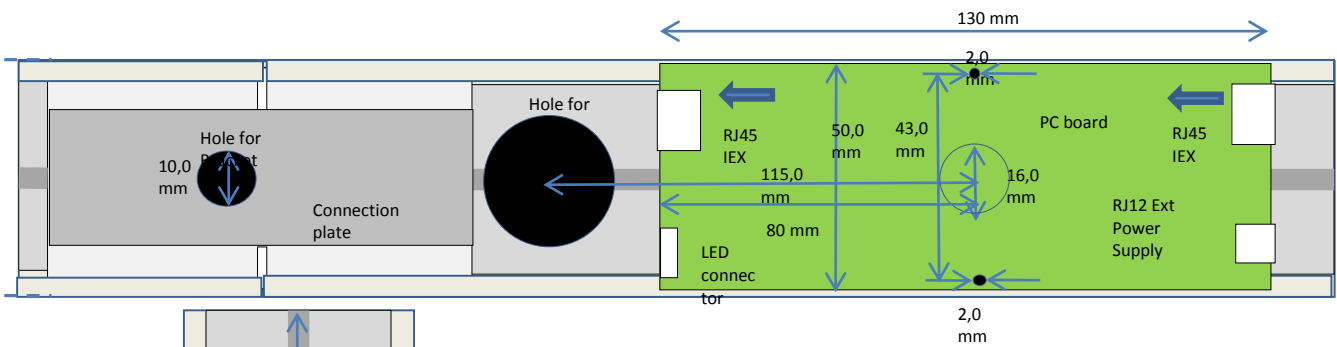
Part numbers:

MP-PSlot-T

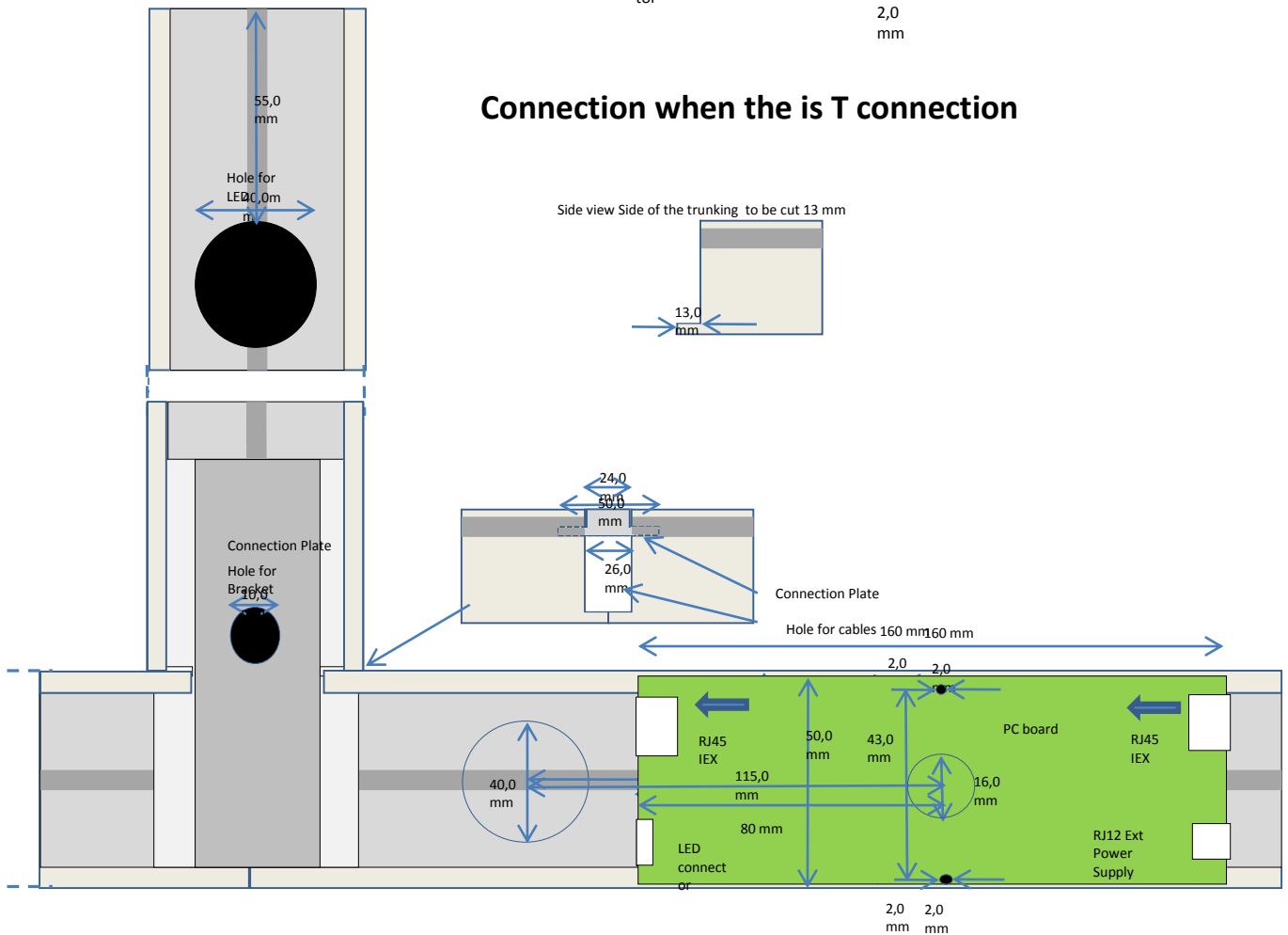
Holes and measurements of trunking



Connection when it is no T connection



Connection when the is T connection



MP-BracketKit

Part No MP-Nut



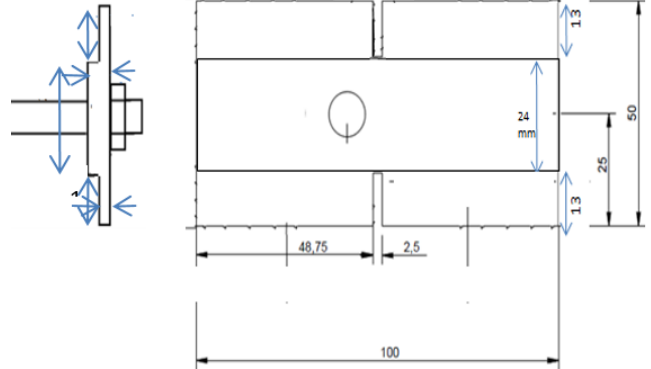
Part no MP-Bracket



Part no MP-Clip



Part no MP-ConPlate



MP-BracketKit consist of:

- 1 MP- Bracket
- 1 MP-Clip
- 2 MP-ConPlate

Threaded rod



Part no MP-Rod/X 10 mm , X stands for the length in cm

